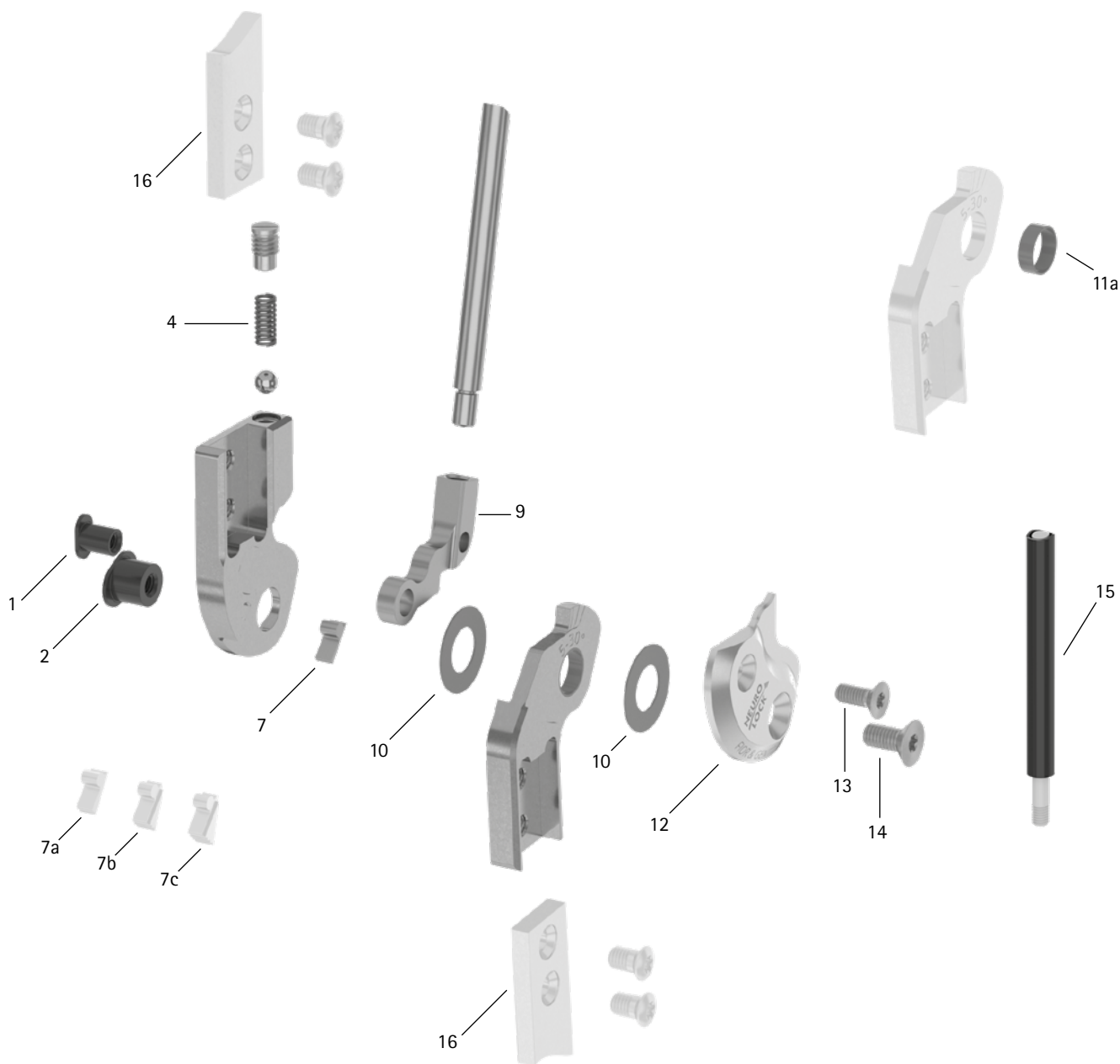


patient commission/configuration ID _____



Item	16mm	Description	Potential Problem	Measure	Inspection/ Replacement, If Necessary	Latest Replace- ment after
System Joint						
1	SB6044-L0750	bearing nut (locking pawl)	wear	replacing	every 6 months	36 months
2	SB9664-L0750	bearing nut (joint axis)				
4	FE1414-02	pressure spring	wear	replacing	every 6 months	18 months
7	SK9603-E005	5° extension stop	wear	replacing	every 6 months	-
7a	SK9603-E010	10° extension stop				
7b	SK9603-E020	20° extension stop				
7c	SK9603-E030	30° extension stop				

WFO101-GB-2021-12

patient commission/configuration ID _____

Item	16mm	Description	Potential Problem	Measure	Inspection/ Replacement, If Necessary	Latest Replace- ment after
9	SK0473-TI038	locking pawl	wear	replacing	every 6 months	36 months
9	SK0473-TI050					
9	SK0473-TI063					
9	SK0473-TI075					
9	SK0473-TI088					
9	SK0473-TI100					
10	GS1910-040	sliding washer, Ø = 19mm	wear	replacing	every 6 months	18 months
10	GS1910-045					
10	GS1910-050					
10	GS1910-055					
10	GS1910-060					
11a	BP1110-L035	sliding bushing	wear	replacing	every 6 months	18 months
12	SK0453-2L/AL	cover plate, left lateral or right medial, aluminium	wear	replacing	every 6 months	36 months
12	SK0453-2R/AL	cover plate, left medial or right lateral, aluminium				
13	SC1404-L10	countersunk flat head screw with hex-alobular socket	wear	replacing	every 6 months	36 months
14	SC1405-L11	countersunk flat head screw with hex-alobular socket (axle screw)	wear	replacing	every 6 months	36 months
Pulling Cable (If Existing)						
15	ZS1000-L400	pulling cable, nylon cable with cover, 400mm	wear	replacing	every 6 months	-
15	ZS1000-L500	pulling cable, nylon cable with cover, 500mm				
15	ZS1000-L600	pulling cable, nylon cable with cover, 600mm				
15	ZS1000-L700	pulling cable, nylon cable with cover, 700mm				
15	ZS1100-L400	pulling cable, separable through coupler, 400mm				
15	ZS1100-L500	pulling cable, separable through coupler, 500mm				
System Anchors and System Side Bars						
16	see catalogue	system anchor and system side bar	wear or breakage	replacing	every 6 months	-