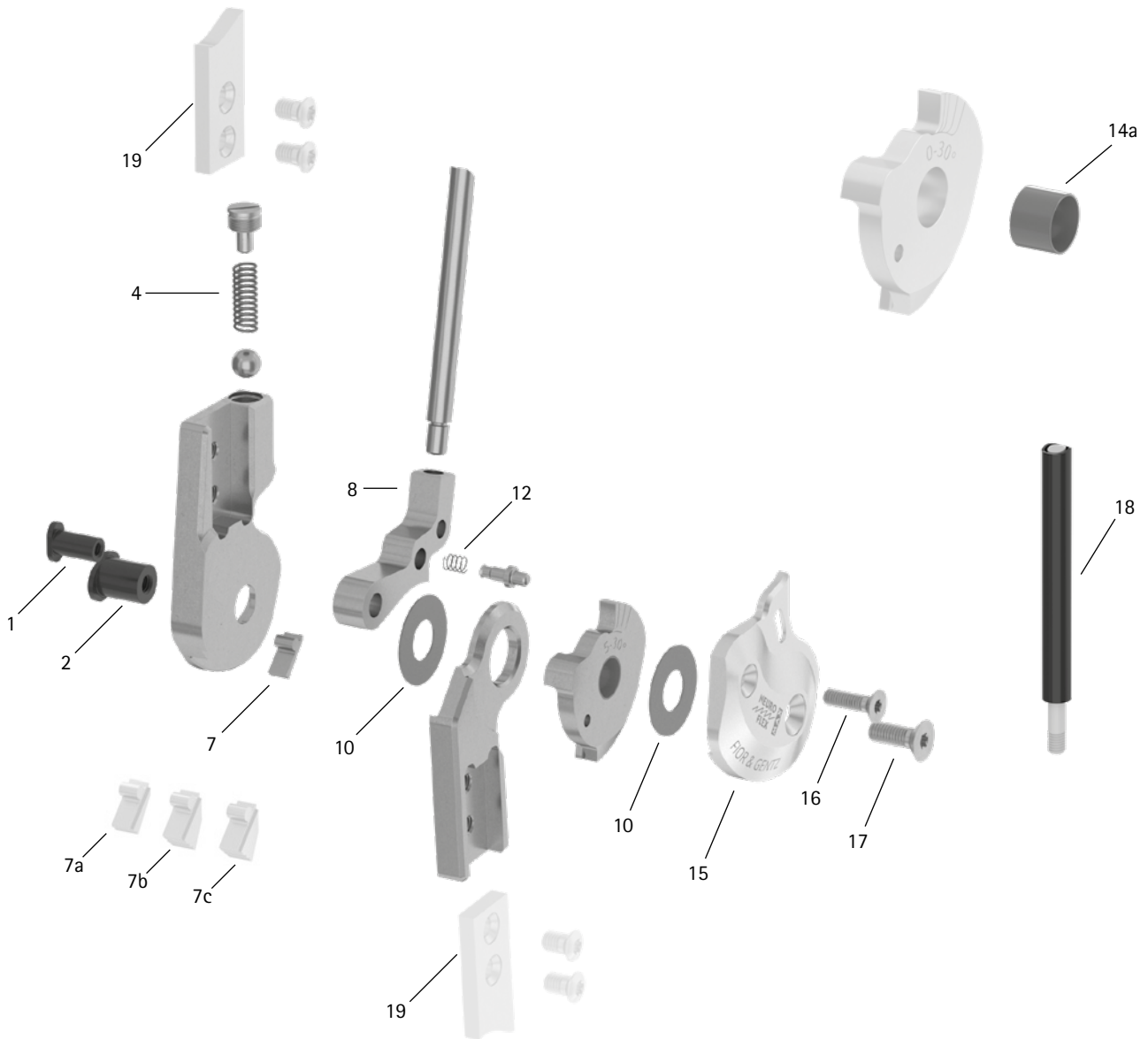


patient commission/configuration ID _____



Item	16 mm	Description	Potential Problem	Measure	Inspection/ Replacement, If Necessary	Latest Replace- ment after
System Joint						
1	SB6049-L1130	bearing nut (locking pawl)	wear	replacing	every 6 months	36 months
2	SB9669-L1130	bearing nut (joint axis)				
4	FE1527-01	pressure spring	wear	replacing	every 6 months	18 months
7	SK9803-E005	5° extension stop	wear	replacing	every 6 months	-
7a	SK9803-E010	10° extension stop				
7b	SK9803-E020	20° extension stop				
7c	SK9803-E030	30° extension stop				
8	SK0773-L/038	locking pawl*	wear	replacing	every 6 months	36 months
8	SK0773-L/050					
8	SK0773-L/063					
8	SK0773-L/075					
8	SK0773-L/088					
8	SK0773-L/100					

* If you need a locking pawl for right lateral or left medial as opposed to a locking pawl for left lateral or right medial listed here, you have to replace the L in the article number with an R. Example: SK0773-R/038.

WFO103-GB-2021-12

patient commission/configuration ID _____

Item	16 mm	Description	Potential Problem	Measure	Inspection/ Replacement, If Necessary	Latest Replace- ment after
10	GS2210-040	sliding washer, Ø = 22mm	wear	replacing	every 6 months	18 months
10	GS2210-045					
10	GS2210-050					
10	GS2210-055					
10	GS2210-060					
12	FE1411-02	pressure spring	wear	replacing	every 6 months	18 months
14a	BP1110-L078	sliding bushing	wear	replacing	every 6 months	18 months
15	SK0763-2L/AL	cover plate, left lateral or right medial, aluminium	wear	replacing	every 6 months	36 months
15	SK0763-2R/AL	cover plate, left medial or right lateral, aluminium				
16	SC1404-L14	countersunk flat head screw with hex-alobular socket	wear	replacing	every 6 months	36 months
17	SC1405-L14	countersunk flat head screw with hex-alobular socket (axle screw)	wear	replacing	every 6 months	36 months
Pulling Cable (If Existing)						
18	ZS1000-L400	pulling cable, nylon cable with cover, 400mm	wear	replacing	every 6 months	-
18	ZS1000-L500	pulling cable, nylon cable with cover, 500mm				
18	ZS1000-L600	pulling cable, nylon cable with cover, 600mm				
18	ZS1000-L700	pulling cable, nylon cable with cover, 700mm				
18	ZS1100-L400	pulling cable, separable through coupler, 400mm				
18	ZS1100-L500	pulling cable, separable through coupler, 500mm				
System Anchors and System Side Bars						
19	see catalogue	system anchor and system side bar	wear or breakage	replacing	every 6 months	-