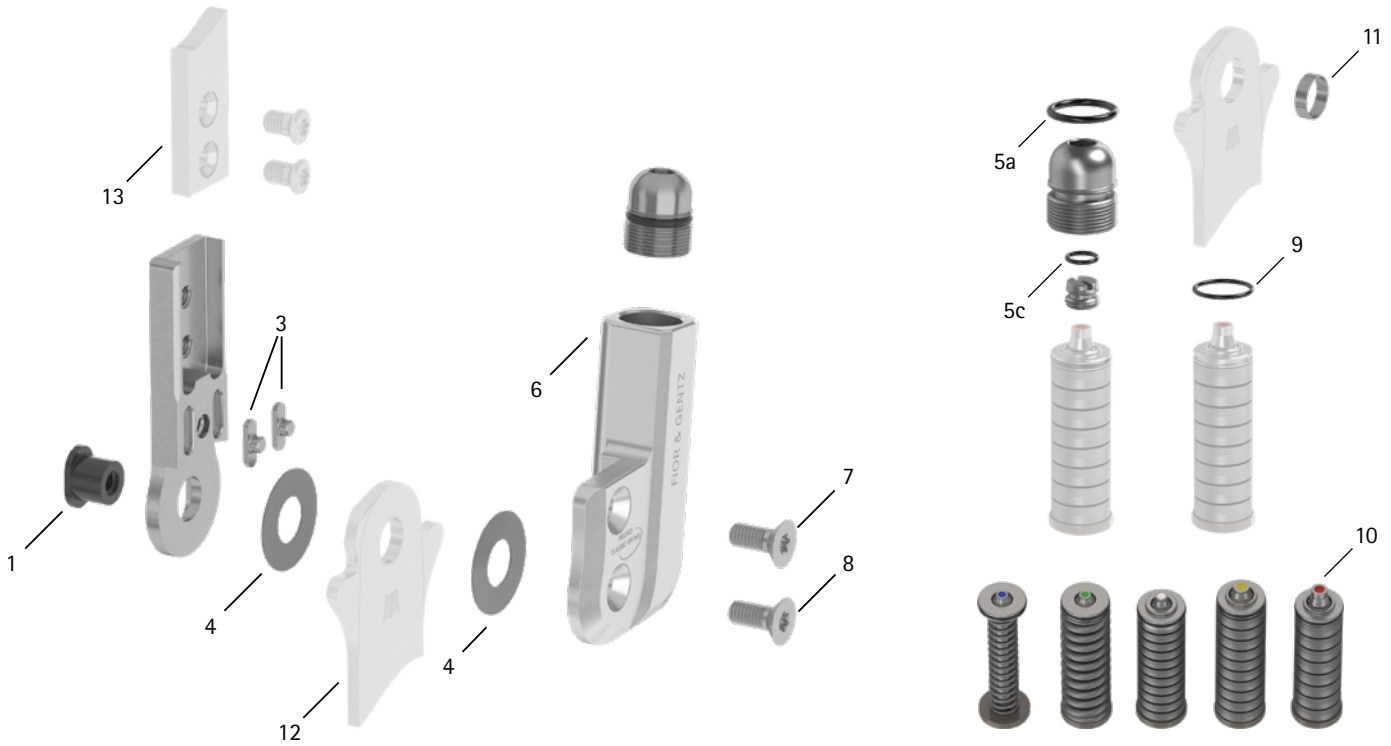


patient commission/configuration ID _____



Item	16mm	Description	Potential Problem	Measure	Inspection/ Replacement, If Necessary	Latest Replacement after
System Joint						
1	SB9669-L0760	bearing nut	wear	wear	every 6 months	36 months
3	SF0393-02	feather key with pin	breakage	replacing	every 6 months	36 months
4	GS2210-040	sliding washer, Ø = 14mm	wear	replacing	every 6 months	18 months
4	GS2210-045					
4	GS2210-050					
4	GS2210-055					
4	GS2210-060					
5a	VE3771-11/15	O-ring for securing the alignment screw	wear	replacing	every 6 months	18 months
5c	VE3771-04/10	O-ring for securing the motion limiting screw	wear	replacing	every 6 months	18 months
6	SH0363-2L/AL	cover plate, left lateral or right medial	wear	replacing	every 6 months	36 months
6	SH0363-2R/AL	cover plate, left medial or right lateral			every 6 months	36 months
7	SC1405-L12	countersunk flat head screw with hexalobular socket	wear	replacing	every 6 months	36 months
8	SC1405-L12	countersunk flat head screw with hexalobular socket (axle screw)			every 6 months	36 months
Spring Units						
9	VE3771-08/10	O-ring for securing the spring unit	wear	replacing	every 6 months	-
10	SF5803-15/07	spring unit, blue, normal, max. 15° range of motion	radial move of disc springs	realigning disc springs with pliers	every 6 months	18 months
10	SF5803-15/15	spring unit, green, medium, max. 15° range of motion				
10	SF5803-10/21	spring unit, white, strong, max. 10° range of motion				
10	SF5803-10/31	spring unit, yellow, very strong, max. 10° range of motion				
10	SF5803-05/63	spring unit, red, extra strong, max. 5° range of motion				
System Stirrups, System Anchors and System Side Bars						
11	BR1110-L030	sliding bushing	wear	replacing	every 6 months	18 months
12	see catalogue	system stirrup	wear or breakage	replacing	every 6 months	48 months
13	see catalogue	system anchor and system side bar	wear or breakage	replacing	every 6 months	-

WP0049-GB-2021-12